



XPLM Batch Processing

The server-based solution for automatic creation and processing of neutral formats for CAD and other files.

As an Oracle certified partner, XPLM Solution offers the Batch Processing Tool to extend Agile EC. This tool provides the ability to automate the generation of neutral format files from the CAD system (PDF, Iges, Step etc.) Either via user controlled process or triggered during ECO and other events within Agile.

Main Features

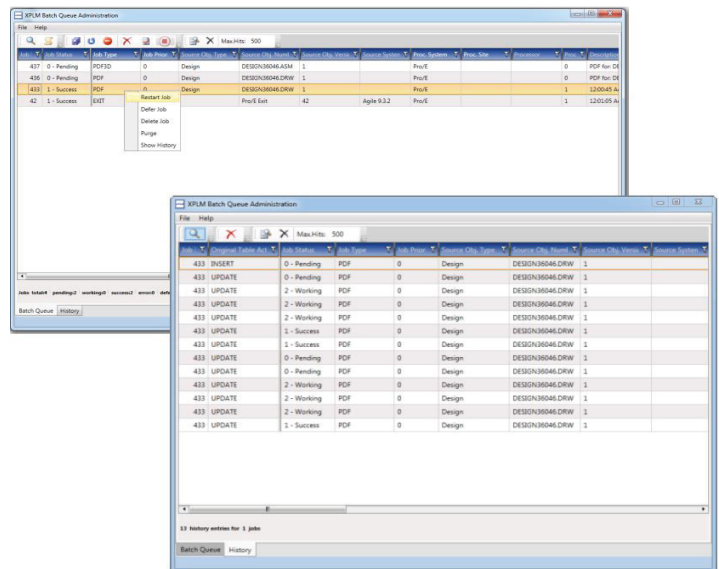
- › Controlled generation of neutral formats
- › Possibility of controlled metadata export via queue
- › Ability to upgrade (refile) CAD files to the

Supported CAD Systems

- › Catia V5
- › Inventor
- › PTC Creo
- › Siemens NX
- › Solidworks
- › SolidEdge
- › Others on request

System Requirements

Operating System: Windows XPL, Windows 7



Screen Shot - Batch QUEUE Admin Tool



XPLM is an Oracle Gold Partner, providing superior CAD and PLM integration solutions for Agile 9 systems. Together with Oracle, XPLM established the “Joint Competency Center for CAD Integrations”

About XPLM

XPLM is a German IT company with a subsidiary in the US. XPLM develops integration solutions between leading PLM, MCAD, ECAD, SysML, ERP, DMU, Publishing, MS Office and data exchange applications. The service portfolio ranges from the analysis and definition of PLM business processes to planning and executing implementations, data migration, training, and operational support. XPLM customers include international companies from the automotive, machine and plant aerospace industries.

Headquarters

XPLM Solution GmbH
Altmarkt-Galerie Dresden, Altmarkt 25
01067 Dresden, Germany

Office +49 351 82658-0
Fax +49 351 82658-88

Office USA

XPLM Solution GmbH
255 Park Avenue, Suite 703
Worcester, MA 01609 USA

Office +1 508 753-7500
Fax +49 351 82658-88