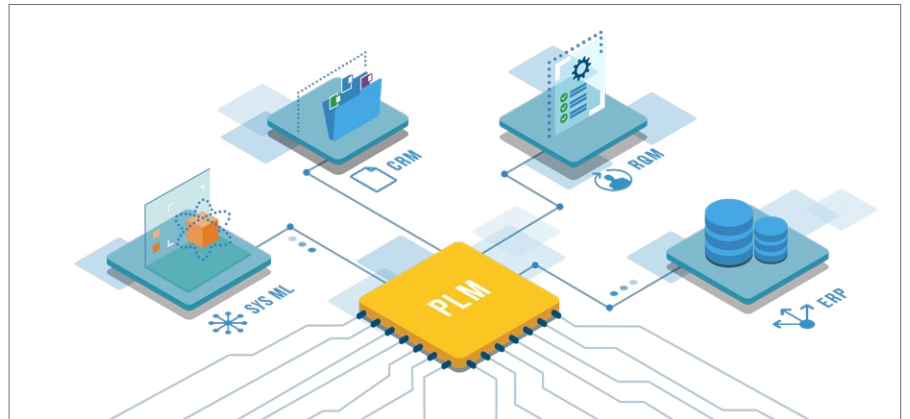




XSPHERE Federation – Collaboration and lifecycle management across domains and applications in a federated environment

Current status of a cross-company collaboration

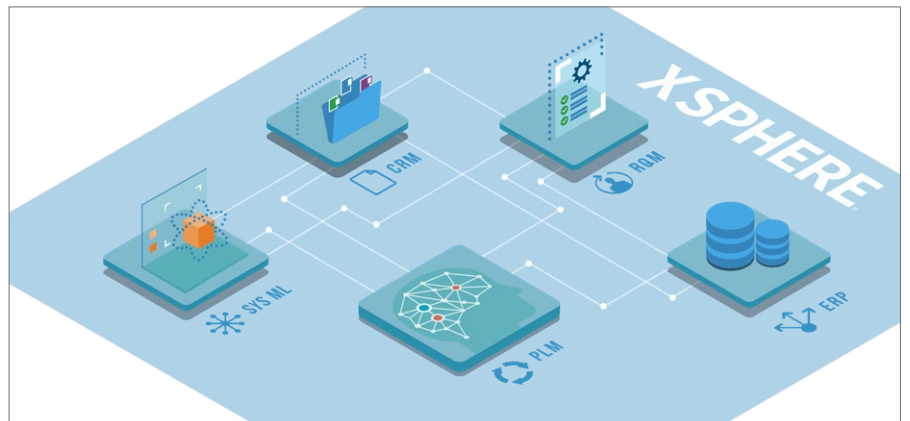
- Many separate data storage locations due to different working environments
- Departments need information from systems of other departments, which are usually foreign to them
- Errors in work processes due to missing or incorrect data from other systems
- A lack of information from other systems leads to a longer time to market



Traditional integration approach

OUR SOLUTION - XSPHERE FEDERATION

- Makes your home application a Cross Enterprise PLM Client
- No more need to copy or synchronize data! With XSPHERE you can find data anywhere in an existing company's information landscape to make solid decisions faster and easier than ever.



XSPHERE Federation approach through linking objects

KEY FEATURES

- With XSPHERE Federation every application can become a 'Base Application' to access a connected 'Satellite Application'
- Enable the system-neutral visualization and processing of information by accessing data objects and their relationships in 'Satellite Applications' at runtime
- No need to copy and synchronize data between applications
- Management of links between data objects stored in various applications
- Fit seamlessly into any system to present information from 'Satellite Applications' in the 'Base Application'
- Simple installation
- No requirement for modification or extension of applications

ADVANTAGES

- Stay in your native working environment and access data and processes from other applications as if they were part of your 'Base Application'
- Search your 'Base Application' for information in 'Satellite Application' to focus on getting the job done instead of validating data from other systems
- Eliminate restrictions on the synchronizing direction of the master when data in the slave is being processed
- Benefit from no data models needs to be changed, since data from the source system is linked by reference and the security of the native data objects is used
- Receive a message in case of changes in connected applications

XPLM INTEGRATION PLATFORM – THE FOUNDATION FOR XSPHERE

Connects directly and fully audited in accordance with security and access rights via API calls to any system with:

- 80+ uniform XPLM application connectors
- XPLM Business Logic Repository with methods and micro services
- XPLM data types and uniform function calls
- Highly customizable and extensible framework

WE OFFER XSPHERE FEDERATION FOR THE FOLLOWING SYSTEMS:

PLM AND PDM

- Ansys Minerva
- Aras Innovator
- Enovia/3DX
- Infor PLM
- Oracle PLM
- SAP PLM
- Siemens Teamcenter
- PTC Windchill

RQM, QA, CRM AND ALM

- Mantis
- Jira
- DOORS
- Integrity
- Polarion

ECAD EDM

- Altium NEXUS

ERP

- SAP

SOFTWARE

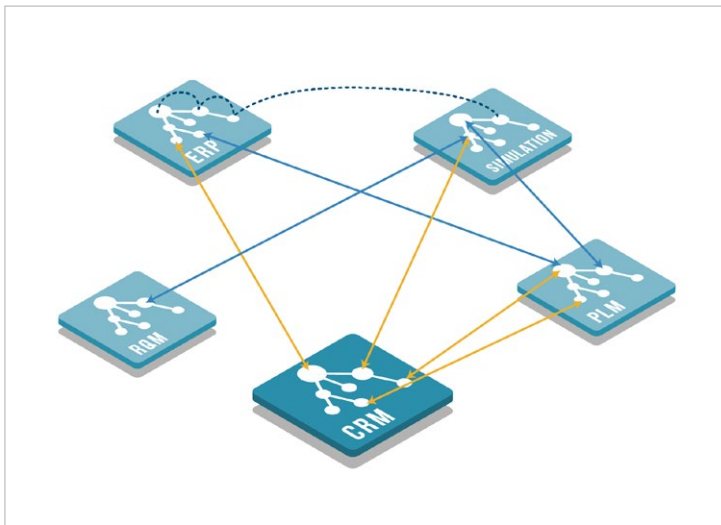
- Subversion
- GIT
- Jenkins
- TeamCity

SIMULATION AND SYSTEM MODELING

- GT POWER
- SimulationX
- Cameo No Magic

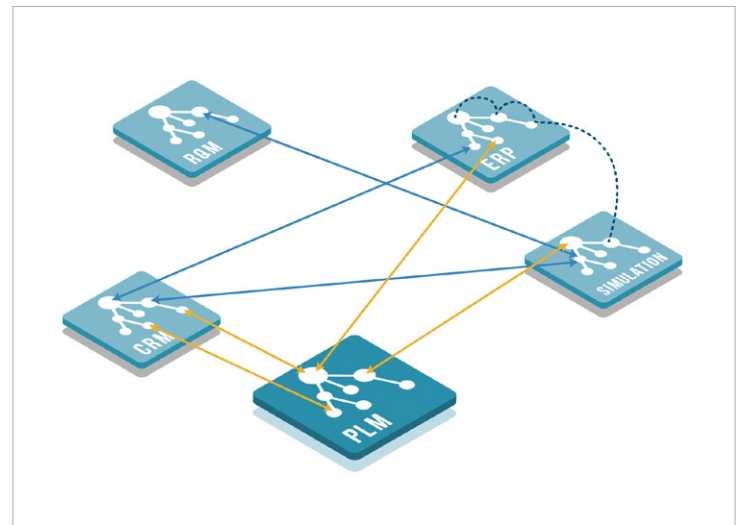
SCENARIO 1

View of the CRM User



SCENARIO 2

View of the PLM User



XPLM offers cross-domain integration solutions for PLM, MCAD, ECAD, SysML, ERP, Office, Requirements Management and ALM/ software tools. For more information please contact marketing@xplm.com.

ABOUT XPLM

XPLM is a globally operating PLM solution provider specializing in integrating applications, processes, data and information for optimum cross-domain collaboration between engineers. With its unique portfolio, XPLM integrates leading PLM, MCAD, ECAD, SysML, ERP, Office, Requirements Management and ALM/software tools.

For more information, visit www.xplm.com.

HEADQUARTERS

XPLM Solution GmbH
Altmarkt-Galerie Dresden,
Altmarkt 25
01067 Dresden, Germany
Office: +49 351 82658-0

Mail: marketing@xplm.com

OFFICE USA

XPLM Solution Inc.
1900 West Park Drive, Suite 280D
Westborough, MA 01581
Office: +1 508 753-7500