



SOLIDWORKS Integration for Oracle Agile EDM (e6)

The efficient administration of product data and therefore the support of engineering processes has become a critical success factor for manufacturing companies today. This also includes the exchange of data between PDM/ PLM and CAD systems.

PRODUCT INFORMATION

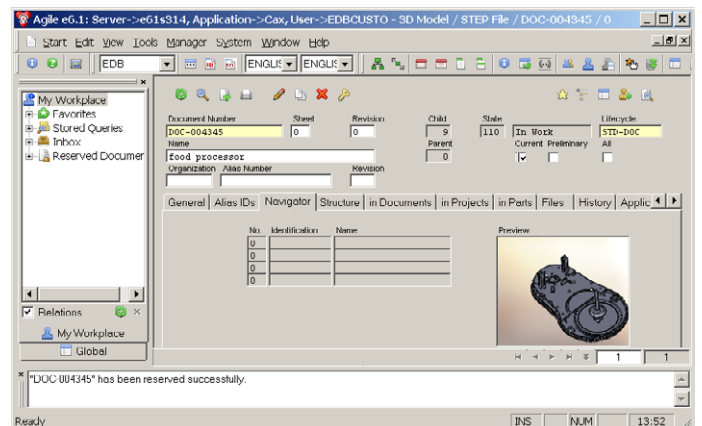
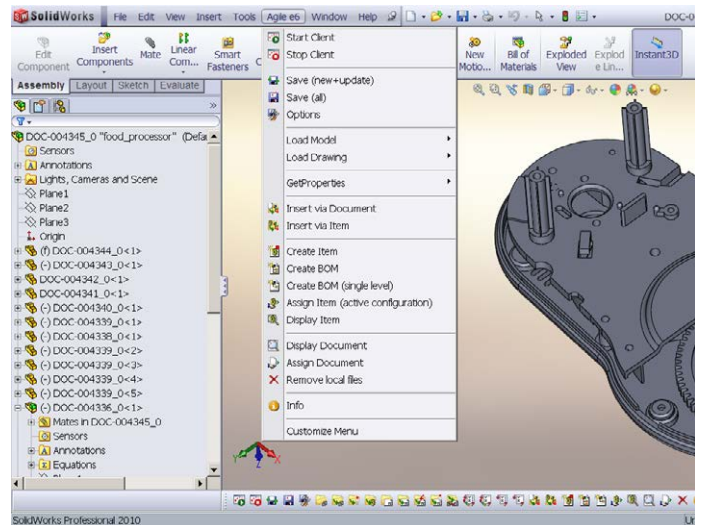
The SOLIDWORKS integration for Oracle Agile e6 offers SOLIDWORKS users an effective and intuitive integration. Data and structures of both, SOLIDWORKS and Oracle Agile e6 are linked to each other allowing for the bi-directional exchange of documents, CAD files, BOMs, parts (material masters), classification, item status and more. Robust customization capabilities are provided yielding lower support and maintenance costs.

SOLIDWORKS INTEGRATION CAPABILITIES

- Document & File Management
- Management of Complex CAD Structures
- Management of Configurations
- Creation of Item Masters and BOM
- Release processing and revisioning
- Check-in and Check-out from CAD
- Automatic Rename to Unique File Names
- Take and Release Ownership
- Management of Multiple Revisions
- Bi-directional Exchange of Properties
- File Conversion (e.g. Viewables)
- User dialogs can be enhanced individually

FUNCTIONS

Metadata and classification properties can be exchanged and updated bidirectionally. This enables to fill out the title blocks within drawings. This process can be performed automatically in the background (batch server) or triggered by any process or workflow event (e.g. status transition).

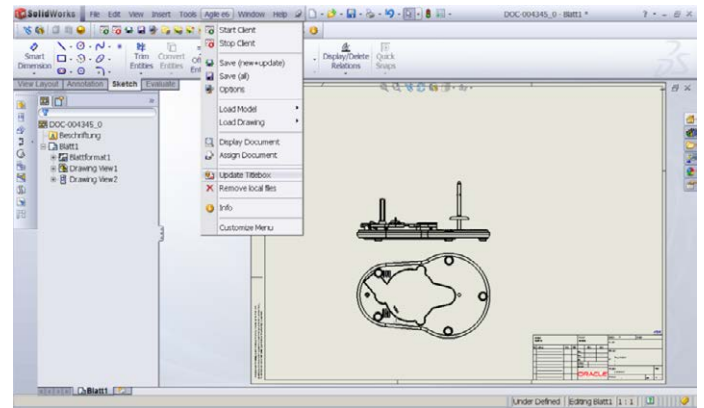


THE SOLIDWORKS INTEGRATION FOR ORACLE AGILE E6 PROVIDES

- Control over CAD data with full support for release processing and revisioning
- Simple PLM access for functions such as loading or saving of CAD data
- High security through the use of robust PLM role and privileges functionality
- Automated bi-directional transfer of properties between CAD and PLM

KEY BENEFITS

- Fast workspace loading through local file access
- Web-Based Collaboration between OEM and Suppliers
- Dialogs can be enhanced and configured specifically for users
- The XPLM Integration Platform can access multiple PLM and ERP sites in parallel
- XPLM integrations share the same look and feel for all CAD system integrations
- Batch processor enables file conversions, bulk transfer and migration operations
- Script-based process definition layer

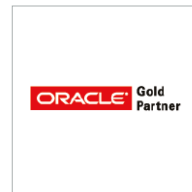


SUPPORTED OBJECTS

- SLDASM, SLDPRT, SLDDRW
- Configurations and Derived Configurations

SYSTEM REQUIREMENTS

- Oracle: Agile e6 6.1, 6.2.x
- SOLIDWORKS: 2012 - 2019
- WIN 10



XPLM is an Oracle Certified Solution and Service Partner. The two companies have founded "J2CI" the Joint Competency Center for CAD Integration.

Due to SOLIDWORKS licensing conditions, XPLM only offers this integration as a custom project.

XPLM offers cross-domain integration solutions for PLM, MCAD, ECAD, SysML, ERP, Office, Requirements Management and ALM/ software tools.

For more information please contact marketing@xplm.com.

ABOUT XPLM

XPLM is a globally operating PLM solution provider specializing in integrating applications, processes, data and information for optimum cross-domain collaboration between engineers. With its unique portfolio, XPLM integrates leading PLM, MCAD, ECAD, SysML, ERP, Office, Requirements Management and ALM/software tools.

For more information, visit www.xplm.com.

HEADQUARTERS

XPLM Solution GmbH
Altmarkt-Galerie Dresden,
Altmarkt 25
01067 Dresden, Germany
Office: +49 351 82658-0

Mail: marketing@xplm.com

OFFICE USA

XPLM Solution Inc.
1900 West Park Drive, Suite 280D
Westborough, MA 01581
Office: +1 508 753-7500