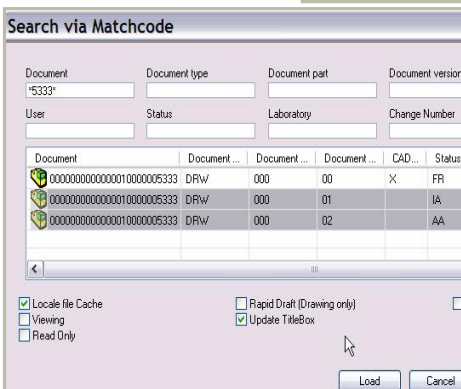
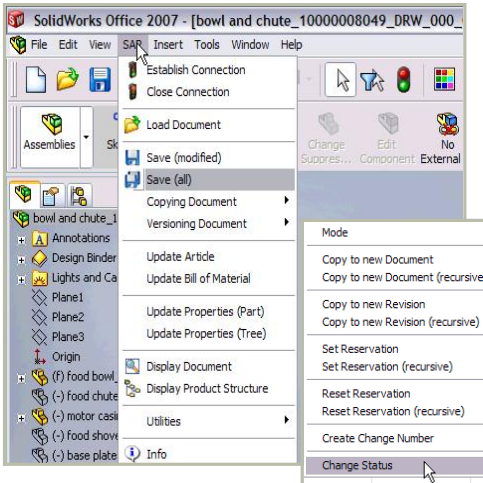


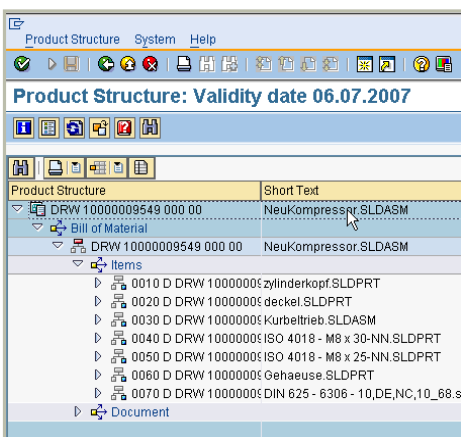
# SolidWorks® Integration for SAP®

## J2xPLM® INTEGRATION PLATFORM

xPLM Solution's J2xPLM Integration Platform, a SAP certified solution, provides a SolidWorks integration with flexible deployment options to support your engineering best practices! xPLM Solution's expertise in CAD and PLM integrations provides SolidWorks and SAP customers a robust, flexible, and configurable integration.



xPLM provides an effective and intuitive integration between PDMWorks Enterprise and SAP



Within your SAP ERP system, uploaded items are automatically created such as material masters, BOMs and associated (linked) documents.

A good integration between product lifecycle management (PLM) and CAD systems is a prerequisite to support efficient engineering processes and drive increased innovation. This has never been more important and needed than now as distributed and global design and engineering teams must collaborate across enterprises and supply chains. Access to the right design data and related manufacturing and supply chain data must be readily yet securely accessible in context.

xPLM Solution has leveraged their 20 years experience in building effective CAD, Product Lifecycle Management (PLM), Digital Mock Up (DMU), MS-Office and ERP integrations to offer a next generation of Service-Oriented CAX and PDM integrations, based on their J2xPLM Integration Platform, for SolidWorks and SAP.

### SolidWorks Integration for SAP

The SolidWorks integration for SAP, developed by xPLM Solution, offers SolidWorks users an effective and intuitive integration with their SAP PLM system. Data and structures of both SolidWorks and SAP PLM are integrated providing the ability for bi-directional exchange of documents, CAD files, BOMs, parts (material masters), classification, item status and more. SolidWorks users do not need to access SAP PLM interfaces, but can perform all integration activities using the SolidWorks menus and forms, this increases user adoption and satisfaction. Robust customization capabilities are provided outside the SAP environment yielding lower support and maintenance costs.

### SolidWorks Integration Features

#### User Interface Integration in SolidWorks

- Toolbar, System Menu, Context Menu, Forms

#### Deep Integration with SAP PLM Objects & Object Structures

- SAP Document & File Management, Material Master & BOM, Classification, Change and Release Management, and SAP User Interface Integration

#### Workflow Integration (Triggered by any SolidWorks event)

- Status Transition, Checkin/out, and other Customer Defined Events

#### Integration Functionality – Documents Update

- Bidirectional Exchange of Metadata and Classification
- Document Structures
- Document Status Network (Release Levels)
- File Checkin/out (Including Conversion to Neutral File Format)
- Integration of MS-Office and PDF documents

#### Integration Functionality – BOM/ Material/Items Update

- Bidirectional Exchange of Metadata and Classification
- Support for PDMWE/SolidWorks Configurations
- Linking to Documents
- Production and Order BOM Support

#### Customization Capabilities

- COM Automation Support (VBA Script)
- XML Engine

**J2xPLM Integration Platform  
Additional Benefits**

- Fast workspace loading through local file configuration access
- Web-Based Collaboration between OEM and Suppliers
- Dialogs and features can be enhanced and configured specifically for users
- J2xPLM Integration Platform can access multiple PLM and SAP sites in parallel
- J2xPLM integrations share the same look and feel for all CAD system integrations
- Batch processor enables file conversions, bulk transfer and migration operations
- Script-Based Process Definition Language

**System Requirements**

- J2xPLM: V 1.0 or later  
 SAP: SAP 4.x or later  
 NetWeaver: SAP Web AS 6.2 or later  
 SolidWorks: SolidWorks 2007 -2010



xPLM Solution is a SAP Software Partner providing highly qualified CAD and PLM connectors for SAP. The J2xPLM Integration Platform v2.0 is certified by SAP.

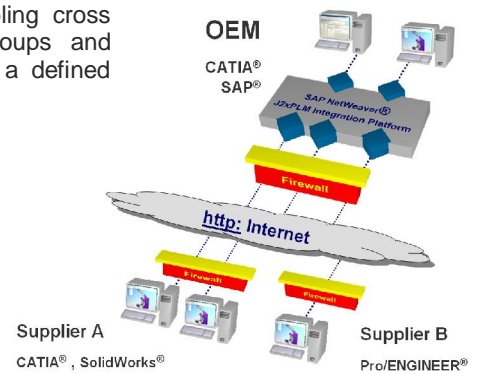


xPLM Solution is a SolidWorks Solution and a Certified Service Partner, providing highly qualified implementation experts with focused CAD/PLM skills and experience to ensure success. This is the highest level of accreditation a service partner can achieve in cooperation with SolidWorks.

**Program Driven Design / Cross Enterprise Engineering**

Move from simple data exchange to true design collaboration by effectively controlling CAX file and data management with SAP PLM enabling cross collaboration among distributed workgroups and partners all interacting with SAP under a defined and secure common environment.

- Cross enterprise collaboration between OEM and suppliers
- All partners work within one SAP PLM instance
- SAP GUI not needed
- Web access via http protocol and across firewalls



xPLM Solution's J2xPLM Integration Platform provides highly qualified CAD and PDM connectors. The J2xPLM Integration Platform supports integration with MS-Office, PDM/PLM, CAD, ERP, VR/DMU, ECAD and Data Exchange applications.

**About xPLM Solution**

xPLM Solution with headquarters in Dresden develops integration solutions between industry leading CAD, PLM and ERP systems and provides deployment and support services to the PLM industry. xPLM Solution brings with them about 300 years of accumulated professional experience in the PLM market. For more than 20 years, the team has been at the forefront of developing and deploying robust, flexible, configurable and cost efficient CAD and PLM integrations.

**Solutions and Deployment Services**

- CAD Integrations for PLM and ERP
- PLM Management Consulting
- PLM Deployment Services
- PLM Training and Documentation
- Client Project Support Services



**Experience in Product Lifecycle Management**

xPLM Solution GmbH  
 Devrientstr. 5, 01067 Dresden, GERMANY  
 Email: xplm@xplm.com  
 Internet: www.xplm.com  
 Telephone: +49 (351) 8265 821  
 Fax: +49 (351) 8265 888

Contact:  
 Karl "Charly" Wachtel  
 Email: karl.wachtel@xplm.com  
 Mobile: +49 (172) 7243 469