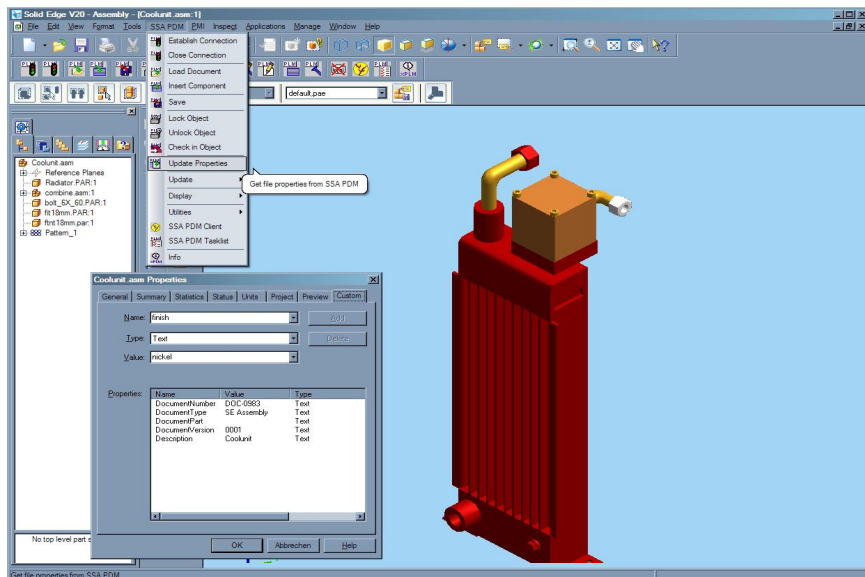


Infor® PLM Integration for Solid Edge®

J2xPLM® INTEGRATION PLATFORM



xPLM Solution's J2xPLM Integration Platform provides an Infor PLM Solid Edge integration with flexible deployment options to support your engineering best practices! xPLM Solution's expertise in CAD and PLM integrations provides Infor and Solid Edge users a robust, flexible and configurable integration.



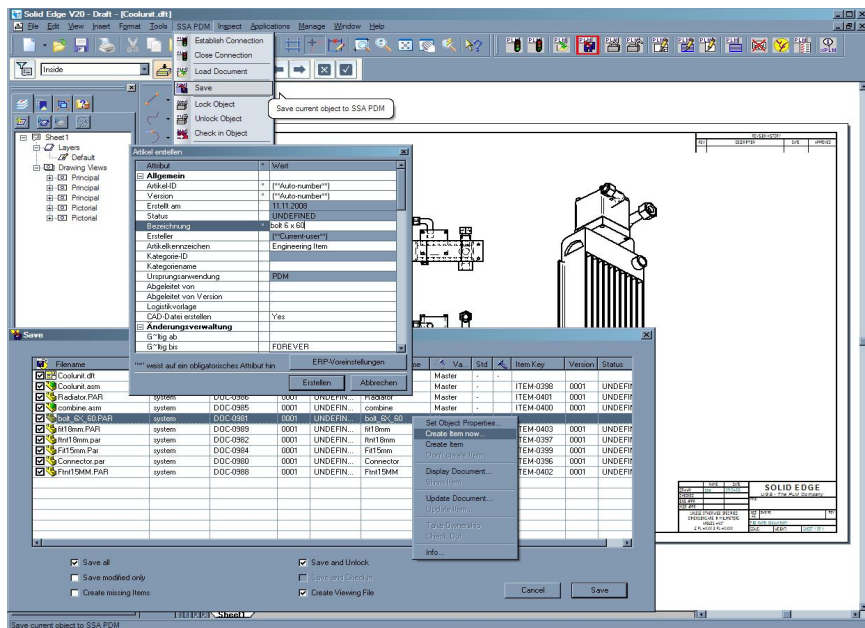
A good integration between PLM and CAD is a prerequisite to support efficient engineering processes and drive increased innovation.

xPLM Solution presents a next generation of Cx and PDM integrations, based on their J2xPLM Integration Platform, for Infor PLM 8 and Solid Edge.

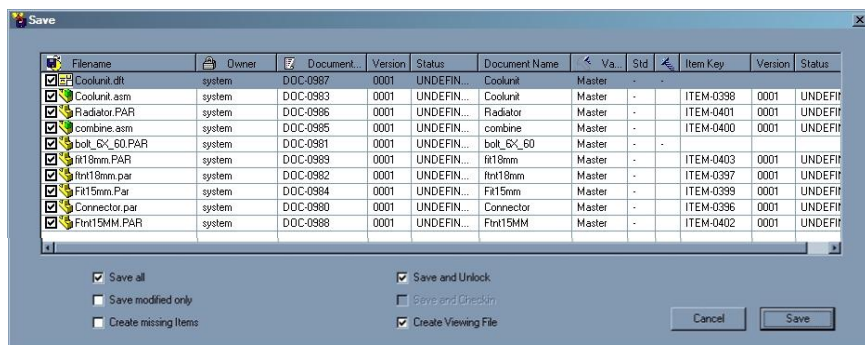
The Infor PLM integration for Solid Edge offers Infor users an effective and intuitive integration. Data and structures of both Infor PLM and Solid Edge are integrated providing the ability for bi-directional exchange of documents, CAD files, BOMs, parts (item masters), classification, item status and more.

Robust customization capabilities are provided yielding lower support and maintenance costs.

Bidirectional Exchange of Properties



Creation of Item Master from Save Preview Form



Integration Capabilities

- Document & File Management
- Management of Complex CAD Structures
- Items & BOM, Based on CAD design
- Workflow and Release Management (Access to the PLM-Task List)
- Check-in and Check-out from CAD
- Take and Release Ownership
- Management of Multiple Revisions
- Save Preview Before Final Saving
- Search and Load from PDM
- Bidirectional Exchange of Properties (e.g. for title block information)
- Update PLM-Attributes from CAD
- File Conversion (e.g. Viewables)



Save Dialog

J2xPLM Integration Platform Features

Deep Integration with Infor PLM Objects and Object Structures:

- Document and File Management, Item Master and BOM, Classification, Change and Release Management

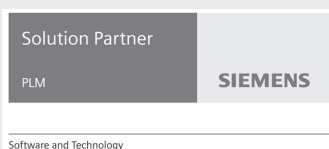
Additional Benefits

- Dialogs and features can be enhanced and configured specifically for users
- J2xPLM Integration Platform can access multiple PLM and ERP sites in parallel
- Batch processor enables bulk transfer operations and file conversions
- Script-Based Process Definition Language
- COM Automation Support (VBA Script, Java Script, C#)
- XML definition enables creation and configuration of new integration objects

System Requirements

J2xPLM: V 1.0 or later
 Infor PLM: 8.0 – 8.3
 Solid Edge: ST2-ST4
 Platform: Windows XP, Windows 7, x86, AMD64

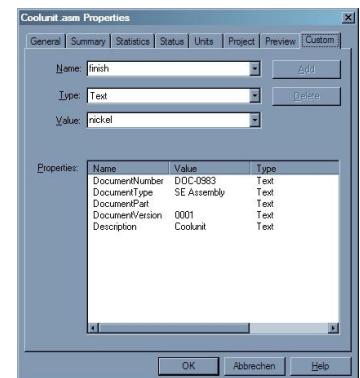
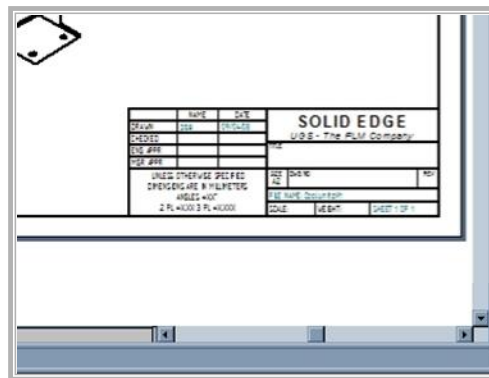
The minimum hardware and software requirements are the same as those required for Aras Innovator and Solid Edge. For details of hardware and software requirements, please refer to the respective CAD and PLM prerequisites.



xPLM Solution is a Siemens Solution Partner providing highly qualified CAD and PLM connectors.



xPLM Solution is an Infor PLM Solution and Implementation Partner, providing highly qualified complementary solutions and implementation experts with experienced CAD/PLM skills to ensure success.



Update of Title Block

Metadata and classification properties can be exchanged and updated bidirectional. This enables the fill out of title blocks within drawings. This process can be performed automatically in the background (batch server), triggered by any process or workflow event (e.g. status transition).

J2xPLM Integration Platform

xPLM Solution's J2xPLM Integration Platform provides Infor PLM users efficient and robust integrations.

The J2xPLM Integration Platform supports integration with many PDM/PLM, CAD, ERP, Visualization, ECAD and Data Exchange applications and MS-Office.



About xPLM Solution

xPLM Solution with headquarters in Dresden develops integration solutions between industry leading CAD, PLM, ERP and Data Exchange applications and provides deployment and support services to the PLM industry. xPLM Solution brings with them about 300 years of accumulated professional experience in the PLM market. For more than 20 years, the team has been at the forefront of developing and deploying robust, flexible, configurable and cost efficient CAD and PLM integrations. The J2xPLM Integration Platform takes advantage of the latest service-oriented technologies.

Solutions and Deployment Services

- CAD Integrations for PLM and ERP
- PLM Management Consulting
- PLM Deployment Services
- PLM Training and Documentation
- Client Project Support Services

xPLM
 Solution

Experience in Product Lifecycle Management