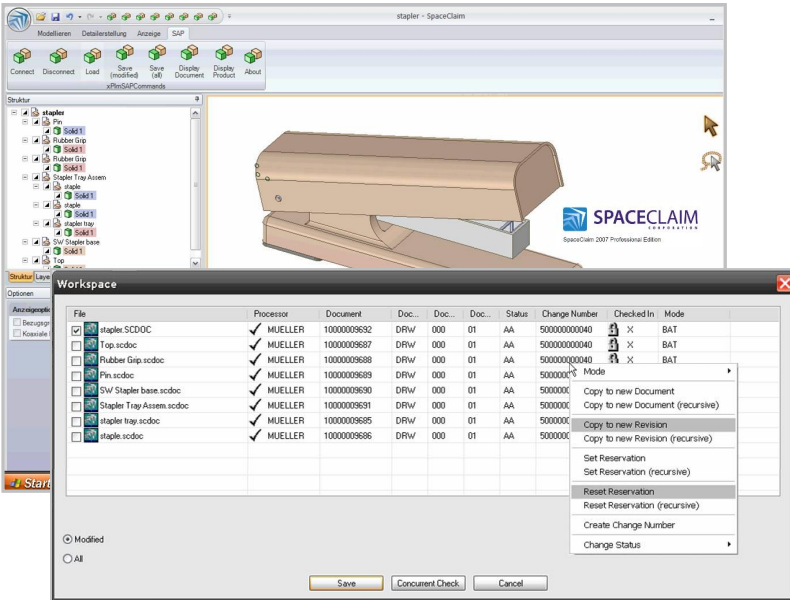


# J2xPLM™ Integration Platform

## SpaceClaim™ Integration for SAP PLM



xPLM Solution's J2xPLM Integration Platform, a SAP certified Integration, now delivers a greatly improved SpaceClaim™ integration and flexible deployment options to support your engineering best practices! The J2xPLM Integration Platform leverages SAP NetWeaver® technology with xPLM Solutions' expertise in CAD and PLM integrations to provide SAP customers a robust, flexible, configurable SpaceClaim integration.



A good integration between product lifecycle management (PLM) systems and CAX applications is a prerequisite to support effective and efficient engineering processes and drive increased innovation. This has never been more important and needed than now as distributed and global design and engineering teams must collaborate across enterprises and supply chains. Access to the right design data and related manufacturing and supply chain data must be readily yet securely accessible in context.

No longer can designers and engineers work separate and apart from the rest of the enterprise. xPLM Solutions has leveraged their 20 years experience in building effective CAD, PLM and ERP integrations to offer a next generation of Service-oriented CAX integrations based on their J2xPLM Integration Platform for SAP developed using SAP NetWeaver technology.

### Integration Capabilities

#### Deep Integration with SAP PLM Objects & Object Structures

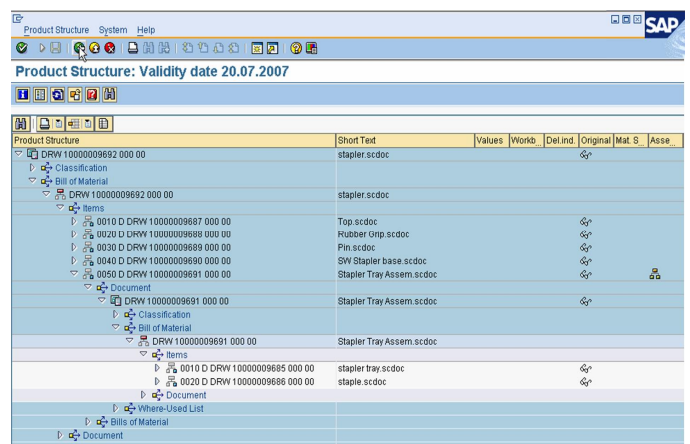
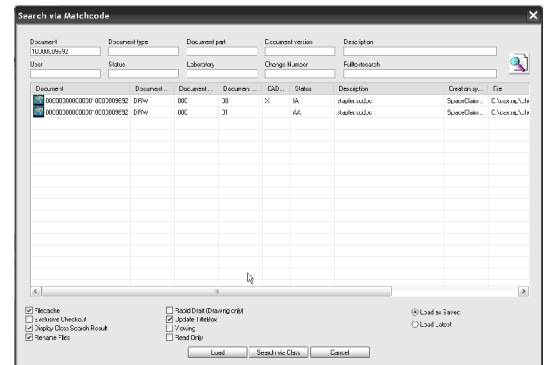
- SAP Document & File Management, Material Master & BOM, Classification, Change and Release Management

#### Configuration Management

- Management of complex CAD model structure configurations
- Collaboration without conflicts of concurrently used assemblies
- Versioning & copying of CAD data without naming conflicts
- Management of multiple versions, revisions, baselines and variants
- Save preview & "Concurrent Check" before final saving

#### Additional Benefits

- Fast workspace loading through local file configuration access
- Web-Based Collaboration Between OEM and Suppliers
- Dialogs and features can be enhanced and configured specifically for users and CAD systems
- J2xPLM Integration Platform can access multiple PLM and SAP sites in parallel
- J2xPLM integrations share the same look and feel for all CAD system integrations
- Batch processor enables file conversions & bulk transfer operations
- Bidirectional exchange of properties (e.g. for title block information)
- Script-Based Process Definition Language



# J2xPLM™ Integration Platform

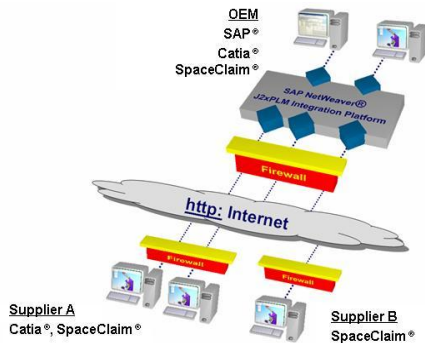
## SpaceClaim™ Integration for SAP PLM

# xPLM

## Solution

### Cross Enterprise Engineering

Move from simple data exchange to true design collaboration by effectively controlling CAx file and data management with my SAP PLM enabling cross collaboration among distributed workgroups and partners all interacting with SAP under a defined and secure common environment.



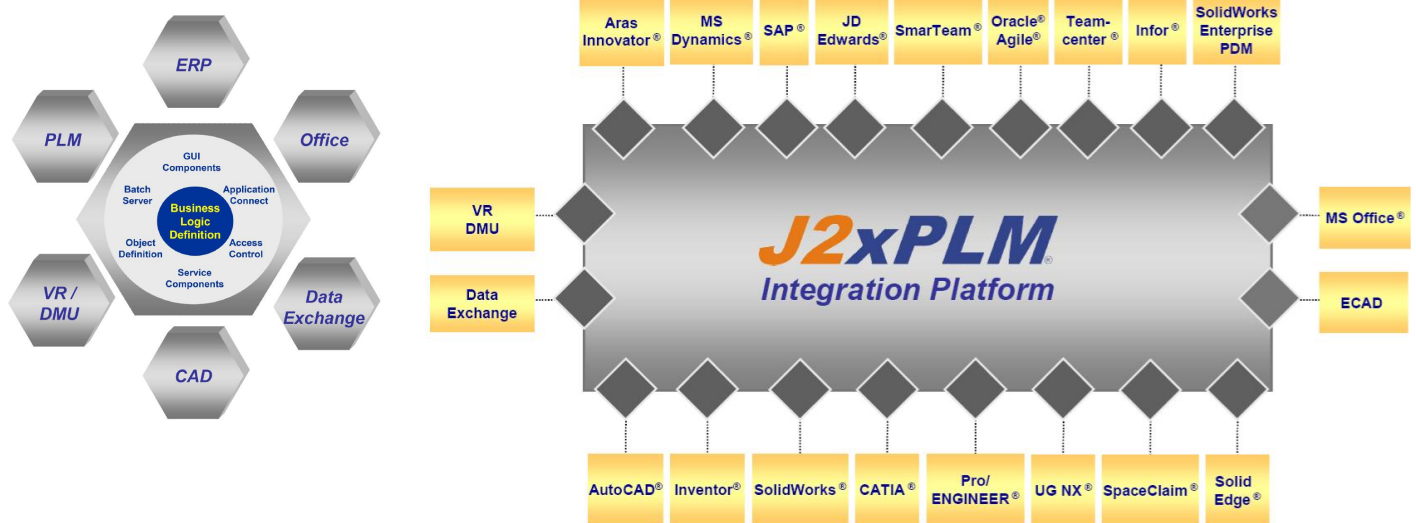
### About xPLM Solution

xPLM Solution specializes in providing integration solutions and deployment services to the PLM industry. For more than 20 years, the xPLM team has been at the forefront of developing and deploying optimal integrations of leading CAD, PLM and ERP systems. The J2xPLM Integration Platform V2 is a SAP certified Solution.

**SAP® Certified**  
Powered by SAP NetWeaver®

### System Requirements

J2xPLM:	V 1.0 or later
SAP:	SAP 4.x or later
NetWeaver:	SAP Web AS 6.2 or 6.4
SpaceClaim:	2008
Operating system:	Windows



### J2xPLM Integration Platform

integrates with many PLM, ERP, CAD, ECAD applications, Viewing / DMU, Data Exchange solutions and MS-Office.

## Experience in Product Lifecycle Management

### xPLM Solution GmbH

Devrientstr. 5, D-01067 Dresden, GERMANY

Email: [xplm@xplm.com](mailto:xplm@xplm.com)

Internet: [www.xplm.com](http://www.xplm.com)

Telephone: +49 (351) 8265 821

Fax: +49 (351) 8265 888

### Contact

Name: Karl „Charly“ Wachtel

Email: [karl.wachtel@xplm.com](mailto:karl.wachtel@xplm.com)

Mobile: +49 (172) 7243 469

Office: +49 (351) 8265 851

Fax: +49 (6251) 586 791