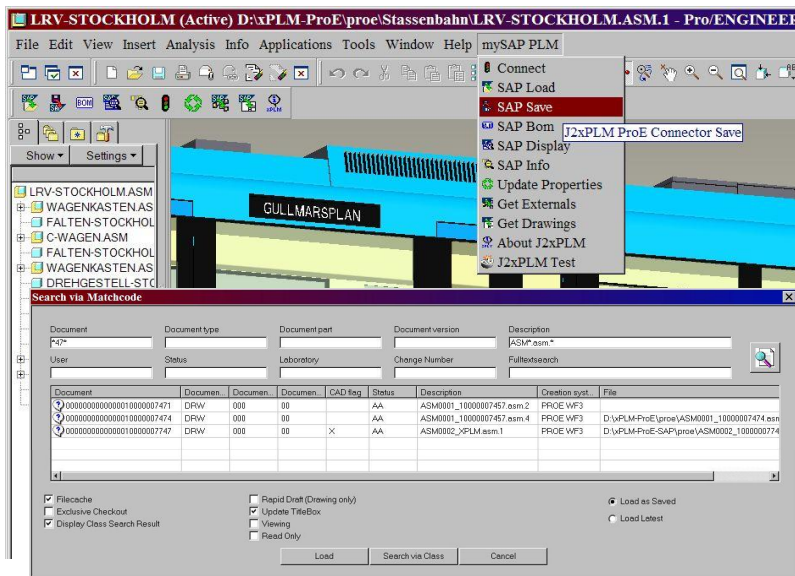


xPLM Solution's J2xPLM Integration Platform v2.0, a SAP certified Integration, now delivers a greatly improved Pro/ENGINEER integration and flexible deployment options to support your engineering best practices! The J2xPLM Integration Platform leverages SAP NetWeaver® technology with xPLM Solutions' expertise in CAD and PLM integrations to provide SAP customers a robust, flexible, configurable Pro/ENGINEER integration.



A good integration between product lifecycle management (PLM) systems and CAX applications is a prerequisite to support effective and efficient engineering processes and drive increased innovation. This has never been more important and needed than now as distributed and global design and engineering teams must collaborate across enterprises and supply chains. Access to the right design data and related manufacturing and supply chain data must be readily yet securely accessible in context. No longer can designers and engineers work separate and apart from the rest of the enterprise. xPLM Solutions has leveraged their 20 years experience in building effective CAD, PLM and ERP integrations to offer a next generation of Service-oriented CAX integrations based on their J2xPLM Integration Platform for SAP developed using SAP NetWeaver technology.

## Integration Capabilities

### Deep Integration with SAP PLM Objects & Object Structures

- SAP Document & File Management, Material Master & BOM, Classification, Change and Release Management

### Configuration Management

- Management of complex CAD model structure configurations
- Collaboration without conflicts of concurrently used assemblies
- Versioning & copying of CAD data without naming conflicts
- Management of multiple versions, revisions, baselines and variants
- Save preview & "Concurrent Check" before final saving

### Additional Benefits

- Fast workspace loading through local file configuration access
- Web-Based Collaboration Between OEM and Suppliers
- Dialogs and features can be enhanced and configured specifically for users and CAD systems
- J2xPLM Integration Platform can access multiple PLM and SAP sites in parallel
- J2xPLM integrations share the same look and feel for all CAD system integrations
- Batch processor enables file conversions & bulk transfer operations
- Bidirectional exchange of properties (e.g. for title block information)
- Script-Based Process Definition Language

File	Processor	Document	Doc...	Doc...	Doc...	Status	Change Num...	Checke...	Mode
LRV-STO_10000010943.asm.1	✓ BAUMANN	10000010943	DRW	000	00	AA		X	BAT
WAGENKA_10000010935.asm.1	✓ BAUMANN	10000010935	DRW	000	00	AA		X	BAT
1600X12_10000010907.prt.1	✓ BAUMANN	10000010907	DRW	000	00	AA	500000000159	X	BAT
1550X12_10000010908.prt.1	✓ BAUMANN	10000010908	DRW	000	00	AA		X	BAT
SITZ-LI_10000010909.prt.2	✓ BAUMANN	10000010909	DRW	000	00				
2SITZ-R_10000010910.prt.1	✓ BAUMANN	10000010910	DRW	000	00				
WAGENKA_10000010911.prt.1	✓ BAUMANN	10000010911	DRW	000	00				
E-GERAE_10000010912.prt.1	✓ BAUMANN	10000010912	DRW	000	00				
TUER-ST_10000010913.prt.1	✓ BAUMANN	10000010913	DRW	000	00				
2240X12_10000010914.prt.1	✓ BAUMANN	10000010914	DRW	000	00				
2-SITZ_10000010915.prt.1	✓ BAUMANN	10000010915	DRW	000	00				
KNICKSC_10000010916.prt.1	✓ BAUMANN	10000010916	DRW	000	00				
E-GERAE_10000010917.prt.1	✓ BAUMANN	10000010917	DRW	000	00				
SCHILDE_10000010918.prt.1	✓ BAUMANN	10000010918	DRW	000	00				
KOPF278_10000010936.asm.1	✓ BAUMANN	10000010936	DRW	000	00				
RAND-BU_10000010919.prt.2	✓ BAUMANN	10000010919	DRW	000	00				
WISCHER_10000010920.asm.1	✓ BAUMANN	10000010920	DRW	000	00				
STRUKTU_10000010884.prt.1	✓ BAUMANN	10000010884	DRW	000	00				
WISCHBL_10000010885.prt.1	✓ BAUMANN	10000010885	DRW	000	00	AA		X	BAT
WISCHER_10000010886.prt.2	✓ BAUMANN	10000010886	DRW	000	00	AA		X	BAT
KOPF278_10000010921.prt.2	✓ BAUMANN	10000010921	DRW	000	00	AA		X	BAT
SCHIEBE_10000010922.prt.2	✓ BAUMANN	10000010922	DRW	000	00	AA		X	BAT
BUGSCHE_10000010923.prt.2	✓ BAUMANN	10000010923	DRW	000	00	AA		X	BAT

# J2xPLM™ Integration Platform

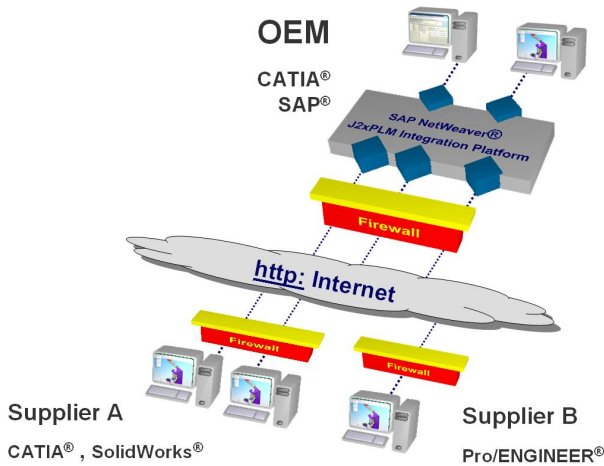
## Pro/ENGINEER™ for SAP™ PLM

# xPLM

## Solution

### Project Driven Design Cross Enterprise Engineering

Move from simple data exchange to true design collaboration by effectively controlling CAx file and data management with my SAP PLM enabling cross collaboration among distributed workgroups and partners all interacting with SAP under a defined and secure common environment.



### About xPLM Solution

xPLM Solution specializes in providing integration solutions and deployment services to the PLM industry. For more than 20 years, the xPLM team has been at the forefront of developing and deploying optimal integrations of leading CAD, PLM and ERP systems. xPLM now supports SAP NetWeaver integration, taking advantage of the latest technologies and business platform offered by SAP. The J2xPLM Integration Platform V2 is a SAP certified Solution.

**SAP® Certified**  
Powered by SAP NetWeaver®

### System Requirements

J2xPLM:	V 1.0 or later
SAP:	SAP 4.x or later
NetWeaver:	SAP Web AS 6.2 or 6.4
PRO/ENGINEER:	Wildfire 3 - 5
Operating system:	Windows, Unix on request



### J2xPLM Integration Platform

integrates with many PLM, ERP, CAD, ECAD applications, Viewing / DMU, Data Exchange solutions and MS-Office.

## Experience in Product Lifecycle Management

### xPLM Solution GmbH

Devrientstr. 5, D-01067 Dresden, GERMANY

Email: [xplm@xplm.com](mailto:xplm@xplm.com)

Internet: [www.xplm.com](http://www.xplm.com)

Telephone: +49 (351) 8265 821

Fax: +49 (351) 8265 888

### Contact

Name: Karl „Charly“ Wachtel

Email: [karl.wachtel@xplm.com](mailto:karl.wachtel@xplm.com)

Mobile: +49 (172) 7243 469

Office: +49 (351) 8265 851