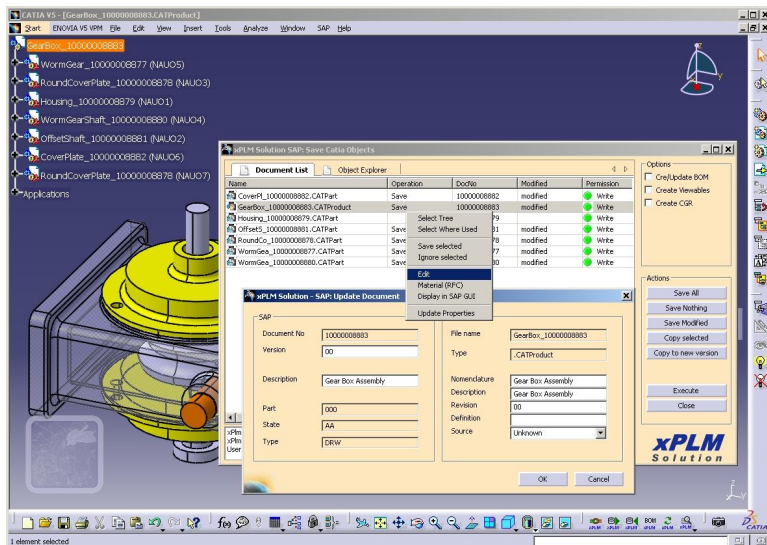


SAP Integration for CATIA® V5

J2xPLM® INTEGRATION PLATFORM



xPLM Solution's J2xPLM Integration Platform V2 is certified by SAP and provides a next generation CATIA V5 integration for SAP with flexible deployment options to support engineering best practices! xPLM Solution's expertise in CAD and PLM integrations provides SAP users a robust, flexible and configurable integration.



The SAP Catia V5 connector offers designers an effective and intuitive integration. Data and structures of both PLM and CAD are integrated providing the ability for bi-directional exchange of documents, CAD files, BOMs, parts (material masters), classification, item status and more. This provides full control over data, with integrated release and change processing.



Major Integration Capabilities

Easy To Use: Users can perform all integration activities using a new UI that provides easy-to-use context-specific toolbars, menus, lists and forms.

Loading from SAP: Load can be initiated directly from a context-specific Load Preview dialog where user can select various load options. Multiple structure resolutions are supported including "Latest in Work", "Latest Checked in", "Latest Published" and "As Saved". Loaded files can be inserted into the current CAD assembly.

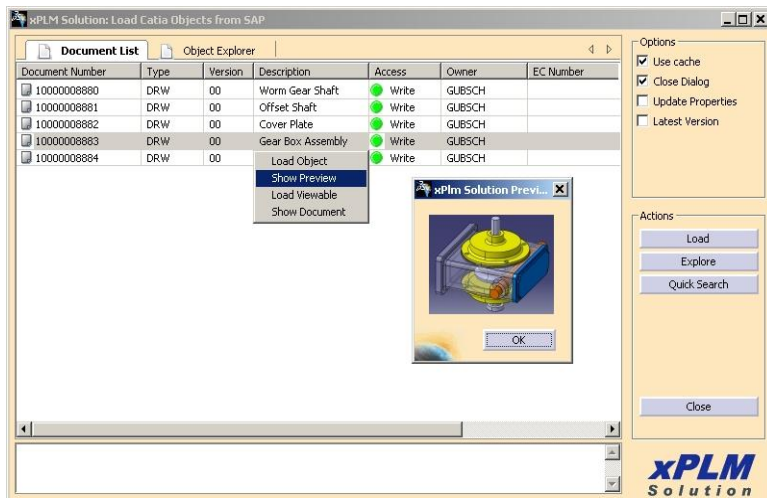
Saving into SAP: Manages all CAD files (parts, assemblies, drawings, etc.) making data available to the rest of the organization, as privileges permit. Several numbering options are available for design objects and parts, with optional renaming of CAD files. Viewable files can be automatically created and attached in PLM along with the native file.

Concurrent Engineering: The Connector is designed to enable multiple designers to work at any one time on different portions of the same overall CAD assembly. Users can take and release ownership

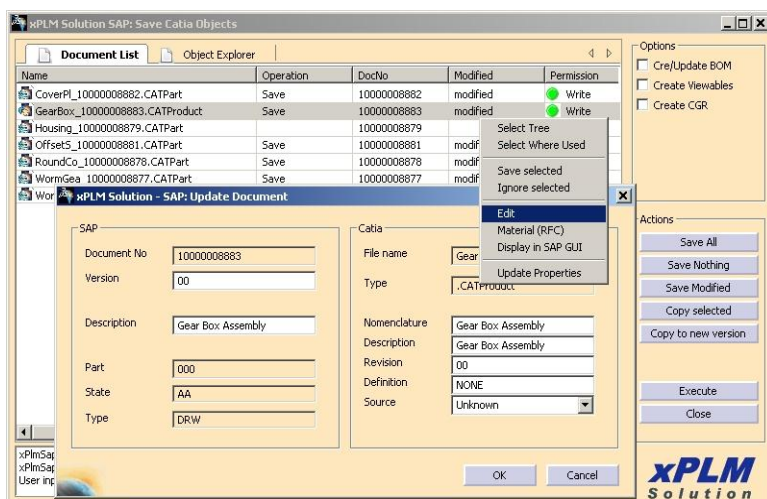
Updating BOM: The connector provides features to create or update SAP Materials and BOMs based on CAD Design Structures.

Support of CGR: Companies working with CATIA V5 often use CGR (CATIA Graphic Representations) files to simplify the representation of parts and assemblies. The Agile CATIA V5 connector supports the management of CGR files. Both the native CATPart or CATProduct file and the corresponding CGR file will be stored in SAP.

File Conversion: An integrated batch server enables the creation of neutral file formats (Viewables) or data exchange files (e.g. Step, IGES).



Load Preview Dialog with Multi-Select and Context Menus



Save Preview with Edit Dialog and context-specific Save Options



J2xPLM Integration Platform Features

Deep Integration with SAP Objects and Object Structures:

- Material Master and BOM, Document and File Management, Classification, Change and Release Management
- Access to all SAP objects via BAPI

Additional Benefits

- Dialogs and features can be enhanced and configured specifically for users
- J2xPLM Integration Platform can access multiple PLM and ERP sites in parallel
- Batch processor enables bulk transfer operations and file conversions
- Script-Based Process Definition Language
- XML definition enables creation and configuration of new integration objects

Supported CATIA Objects

- CATProduct, CATPart, CATDrawing
- Design Table
- CATProcess, CATAnalysis

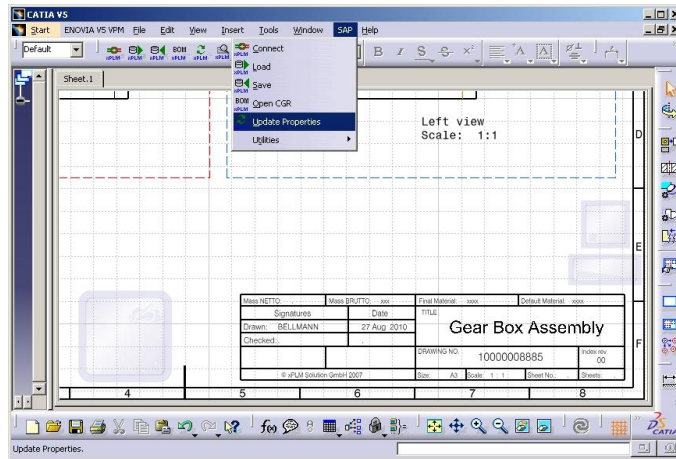
System Requirements

SAP: 4.x or later
 CATIA V5: R18-R20
 Windows: XP, Vista, Windows 7 (32 bit, 64 bit)

The minimum hardware and software requirements are the same as those required SAP and CATIA V5. For details of hardware and software requirements, please refer to the respective CAD and PLM prerequisites.



xPLM Solution is a SAP Software Partner providing highly qualified CAD and PLM connectors for SAP. The J2xPLM Integration Platform v2 is certified by SAP.



Update of Properties and Fill Out of Title Block

Metadata and classification properties can be exchanged and updated bi-directionally. This enables the fill out of title blocks within drawings. This process can be performed automatically in the background (batch server), triggered by any process or workflow event (e.g. status transition).



xPLM Solution's J2xPLM Integration Platform provides highly qualified CAD and PDM connectors. The J2xPLM Integration Platform supports integration with MS-Office, PDM/PLM, CAD, ERP, VR/DMU, ECAD and Data Exchange applications.

About xPLM Solution

xPLM Solution with headquarters in Dresden develops integration solutions between industry leading CAD, PLM, ERP and Data Exchange applications and provides deployment and support services to the PLM industry.



Experience in Product Lifecycle Management