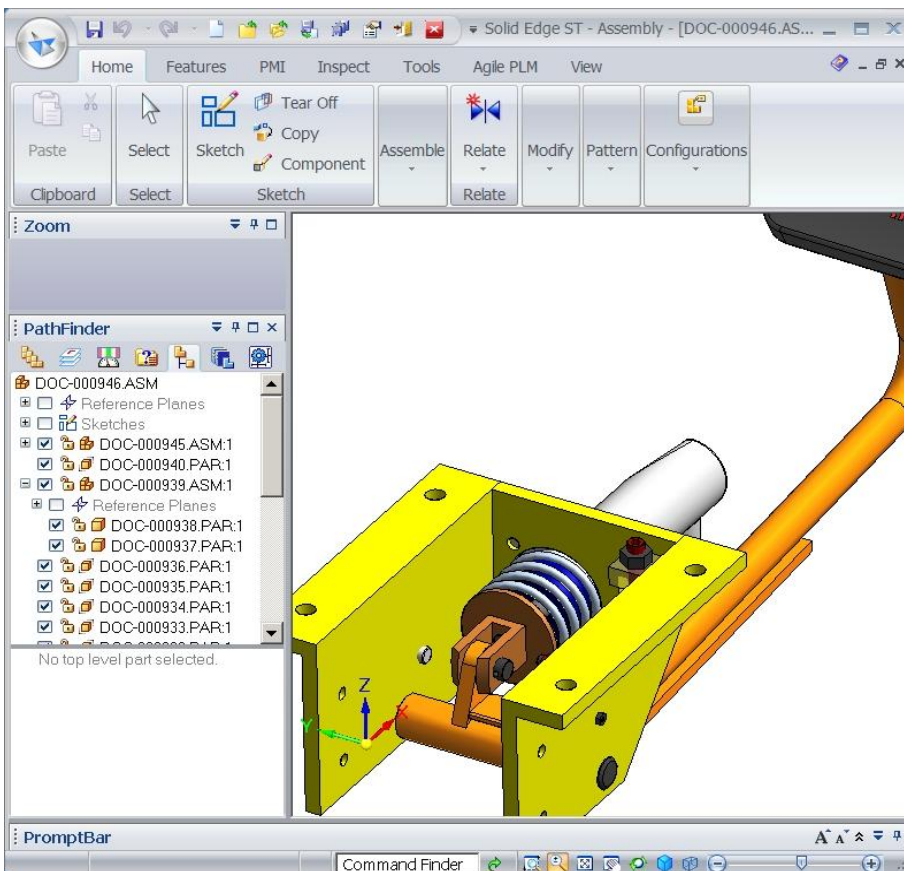


Solid Edge[®] Integration for Agile e6[®]



A good integration between PLM and CAD is a prerequisite to support efficient engineering processes and drive increased innovation. This has never been more important than now as distributed and global design and engineering teams must collaborate across enterprises. Access to the right design data and related manufacturing data must be readily yet securely accessible in context.

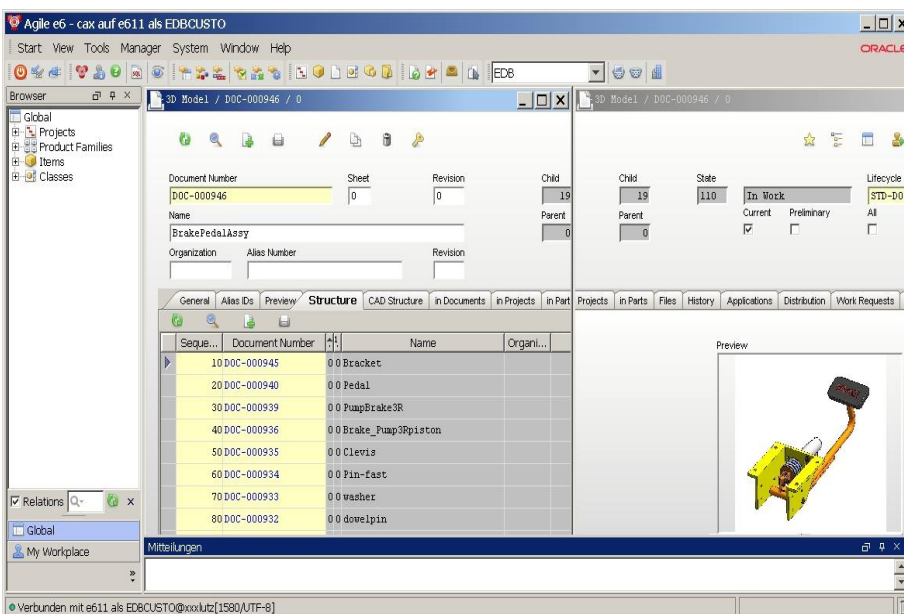
xPLM Solution has leveraged their 25 years experience in building effective CAD, PLM, DMU, MS-Office, Data Exchange and ERP integrations to offer a next generation of CAD integrations.

Solid Edge Integration for Oracle PLM

The Siemens Solid Edge integration for Oracle Agile e6 offers Solid Edge users an effective and intuitive integration with their Oracle e6 PLM system. Data and structures of both Oracle PLM and Solid Edge are integrated providing the ability for bi-directional exchange of CAD files, documents, BOMs, parts, classification, item status and more. Solid Edge users can perform all integration activities using the Solid Edge menus and forms, this increases user adoption and satisfaction. Robust customization capabilities are provided yielding lower support and maintenance costs.

Solid Edge Integration Features:

- Document & File Management
- Management of Complex CAD Structures
- Management of Configurations
- Create of Item Masters and BOM
- Release processing and revisioning
- Check-in and Check-out from CAD
- Automatic Rename to Unique File Names
- Take and Release Ownership
- Management of Multiple Revisions
- Bidirectional Exchange of Properties
- File Conversion (e.g. Viewables)
- User Dialogs can be enhanced specifically



The Solid Edge integration for Oracle Agile e6 provides . . .

- control over CAD data with full support for release processing and revisioning
- simple PLM access for functions such as loading or saving of CAD data
- high security through the use of robust PLM role and privileges functionality
- automated bi-directional transfer of properties between CAD and PLM

J2xPLM Integration Platform Additional Benefits

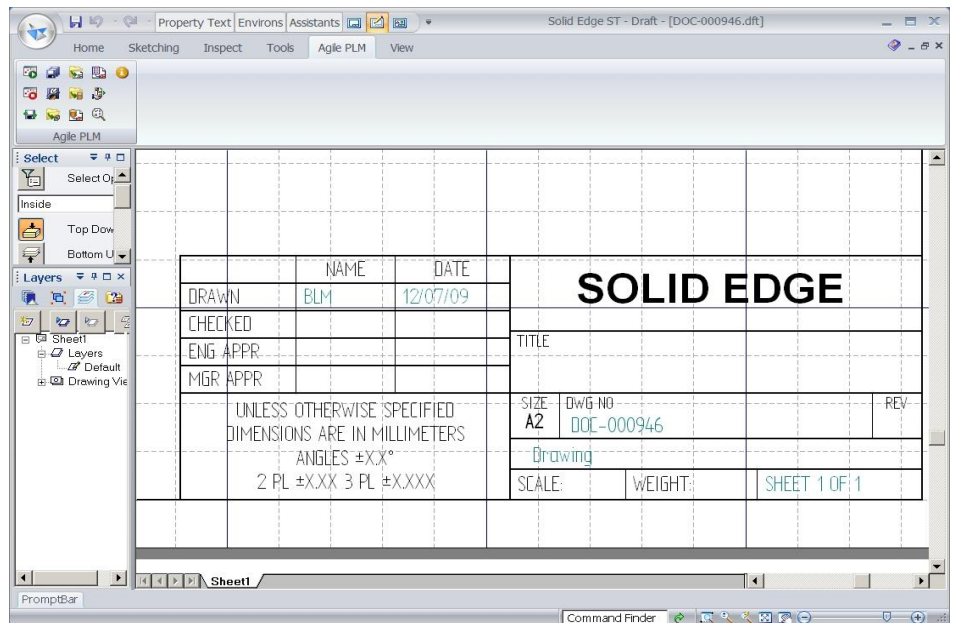
- Fast workspace loading through local file access
- Web-Based Collaboration between OEM and Suppliers
- Dialogs can be enhanced and configured specifically for users
- J2xPLM Integration Platform can access multiple PLM and ERP sites in parallel
- J2xPLM integrations share the same look and feel for all CAD system integrations
- Batch processor enables file conversions, bulk transfer and migration operations
- Script-based Process Definition Layer

Supported Solid Edge Objects

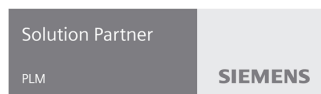
- Traditional and Synchronous ASM, PAR, PSM, PWD, DFT

System Requirements

Agile e6: e 5.x or later
Solid Edge: V 20 or later



Update of Properties: Metadata and classification properties can be exchanged and updated bi-directionally. This enables e.g. the fill out of title blocks within drawings. This process can be performed automatically in the background (batch server), triggered by any process or workflow event (e.g. status transition).



Software and Technology

About xPLM Solution

xPLM Solution with headquarters in Dresden develops integration solutions between industry leading CAD, PLM, Data Exchange, DMU and ERP systems and provides deployment and support services to the PLM industry. xPLM Solution brings with them about 300 years of accumulated professional experience in the PLM market. For more than 25 years, the team has been at the forefront of developing and deploying robust, flexible, configurable and cost efficient CAD and PLM integrations.

Solutions and Deployment Services

- CAD Integrations for PLM, ERP, VR/DMU, Office and Data Exchange solutions
- PLM Management Consulting
- PLM Deployment Services
- PLM Training
- Client Project Support Services

xPLM
Solution



xPLM Solution an Oracle Certified Service and Solution Partner and Oracle founded "J2CI" the Joint Competency Center for CAD Integration.

xPLM Solution GmbH

Devrientstr. 5, 01067 Dresden, GERMANY
Email: xplm@xplm.com; Internet: www.xplm.com
Telephone: +49 (351) 82658-0; Fax: +49 (351) 82658-88

Flyer-Ae6-SSE-EN-2010-09-12 Copyright © 2010

All Rights Reserved. xPLM, J2xPLM are trademarks of xPLM Solution GmbH. All other brands or product names are trademarks or registered trademarks of their respective holders.