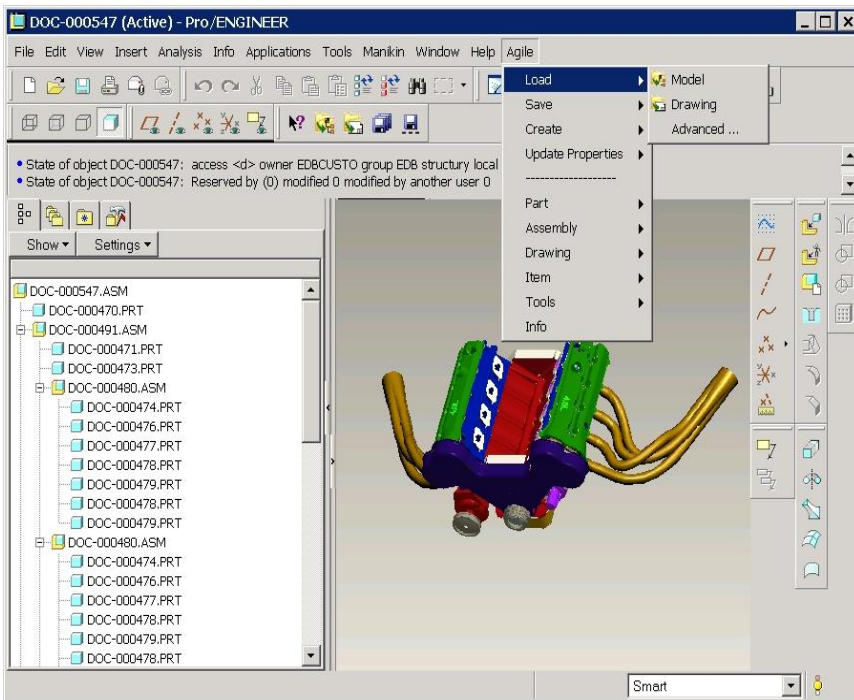


# Pro/ENGINEER® Integration for Agile e6®



A good integration between PLM and CAD is a prerequisite to support efficient engineering processes and drive increased innovation. This has never been more important than now as distributed and global design and engineering teams must collaborate across enterprises. Access to the right design data and related manufacturing data must be readily yet securely accessible in context.

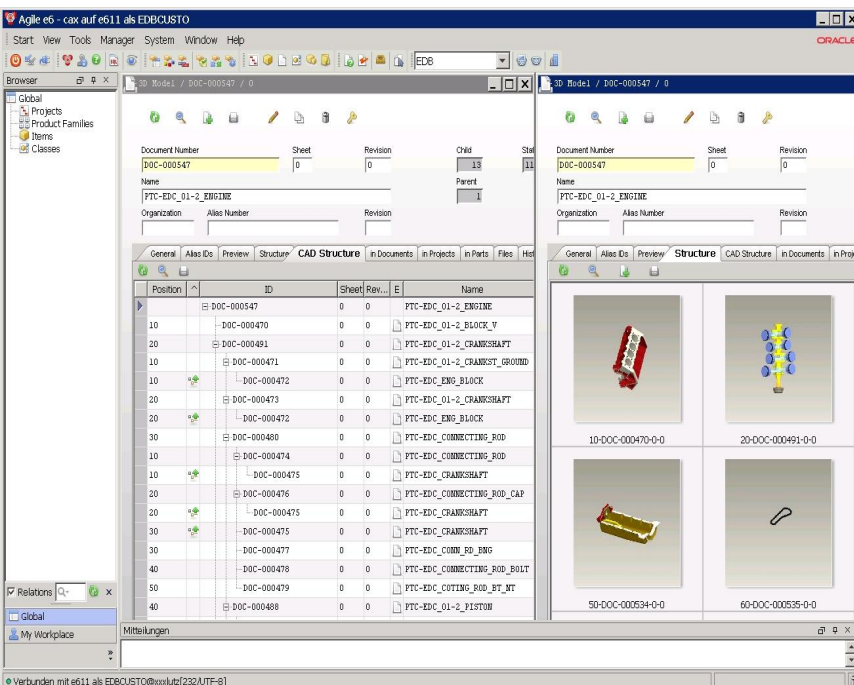
xPLM Solution has leveraged their 25 years experience in building effective CAD, PLM, DMU, MS-Office, Data Exchange and ERP integrations to offer a next generation of CAD integrations, based on their J2xPLM Integration Platform.

## Pro/ENGINEER Integration for Oracle PLM

The Pro/ENGINEER Wildfire integration for Oracle Agile e6 offers CAD users an effective and intuitive integration with their Oracle e6 PLM system. Data and structures of both Oracle PLM and Pro/ENGINEER are integrated providing the ability for bi-directional exchange of CAD files, documents, classification, BOMs, parts, item status and more. CAD users can perform all integration activities using the CAD centric J2xPLM menus and forms, this increases user adoption and satisfaction. Robust customization capabilities are provided yielding lower support and maintenance costs.

## CAD - PLM Integration Features

- Document & File Management
- Management of Complex CAD Structures
- Support of Family Tables and Standard Parts
- Management of Multiple Revisions
- Create of Material Master & BoMs
- Workflow and Release Management
- Check-in and Check-out from CAD
- Automatic Rename to Unique File Names
- Take and Release Ownership
- Save Preview before Final Saving
- Search and Load from CAD or PLM
- Bidirectional Exchange of Properties
- Automated File Conversion (e.g. Viewables)
- User Dialogs can be enhanced specifically



## J2xPLM based CAD integrations provide . . .

- control over CAD data with full support for release processing and revisioning
- simple PLM access for functions such as loading or saving of CAD data
- high security through the use of robust PLM role and privileges functionality
- automated bi-directional transfer of properties between CAD and PLM

