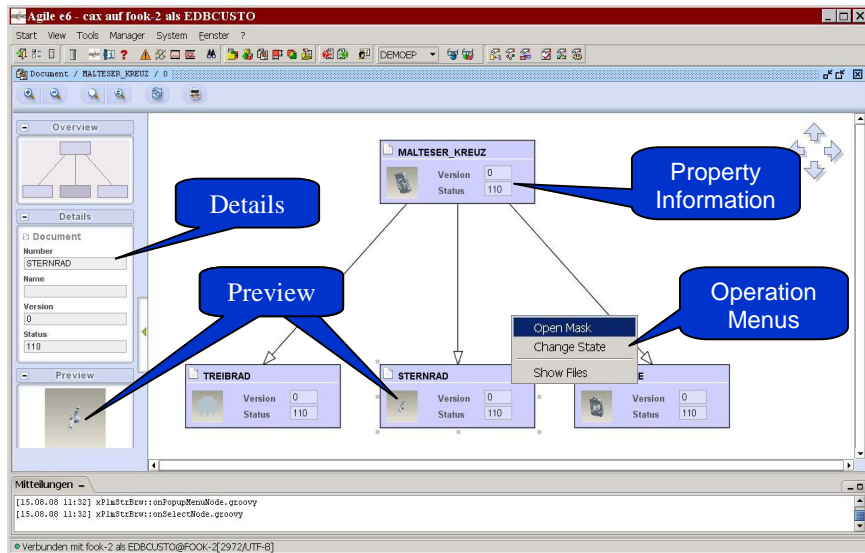


# J2xPLM Structure Browser for Agile® e6



Based on J2xPLM® INTEGRATION PLATFORM

xPLM Solution's J2xPLM Integration Platform offers a graphical structure browser for Agile e5/6 to support your engineering best practices! The seamless integrated add-on provides Agile PLM users an effective and intuitive user interface for the visualization and management of complex and heterogeneous product structures.



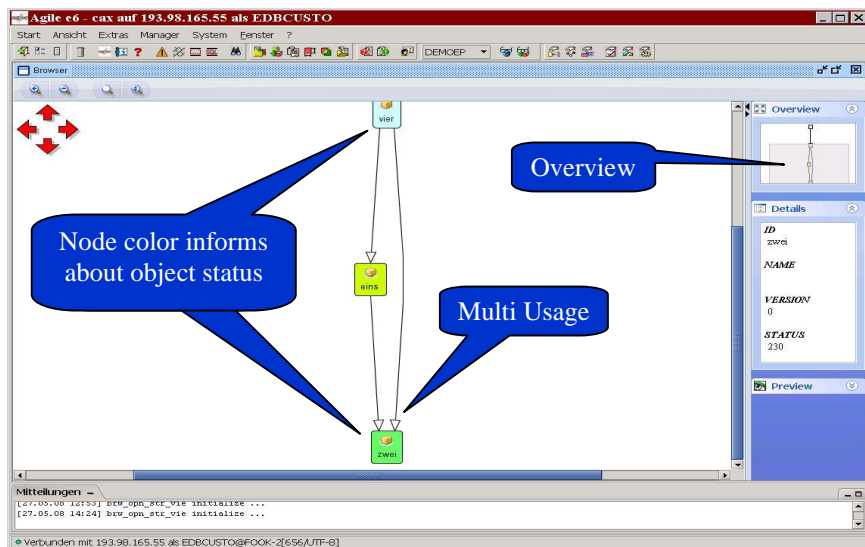
J2xPLM Structure Browser Plugged into Agile e6 Java Client

A good user interface for the visualization and management of PLM objects and structures is a prerequisite to support efficient engineering processes and drive increased innovation.

xPLM Solution presents a next generation of user interface technology, based on the J2xPLM Integration Platform and yFiles® from yWorks®. The J2xPLM Structure Browser is plugged in the e5/6 Java Client or runs as a separate client application.

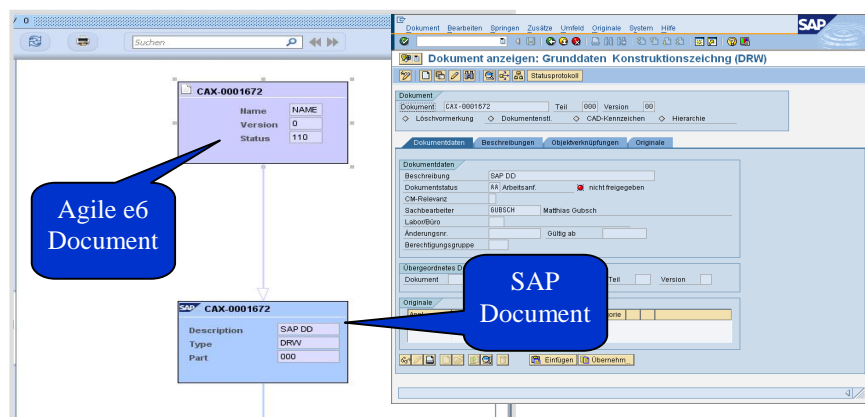
PLM Data like documents, items, projects, classification, etc. their structures and relations can be analyzed, visualized and edited intuitively.

Workflow and status change operations can be processed from the browser object e.g. via context specific right mouse click menus.



## J2xPLM Structure Browser Capabilities

- Plugged into e6 or e5.1 Java Client
- Configurable node and browser layout
- Context specific action menus
- Bi-directional property exchange
- Structure manipulations via drag & drop
- PLM operations can be processed from the browser object directly
- Relevant PLM UI forms can be opened from the browser object directly
- Full text search capabilities
- Presentation of all PLM objects
- Configurable layout stages
- Print out of structure layouts
- Federated (heterogeneous) access to multiple applications



## View of Federated Objects

The J2xPLM Structure Browser offers access to objects of multiple applications in on structure view (e.g. Teamcenter, SAP and Agile e6).

**J2xPLM Integration Platform Features**

Deep Integration with Agile PLM Objects and Object Structures:

- Document and File Management, Material Master and BOM, Classification, Change and Release Management

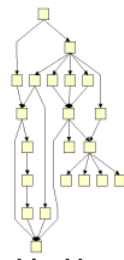
Additional Benefits:

- Dialogs and features can be enhanced and configured specifically for users
- J2xPLM Integration Platform can access multiple PLM and ERP sites in parallel
- Batch processor enables file conversions and configurable bulk transfer operations (e.g. import, export, migration of data)
- Script-Based Process Definition Language
- COM Automation Support (VBA Script, Java Script, C#)
- XML definition enables creation and configuration of new integration objects (e.g. any PLM API component)

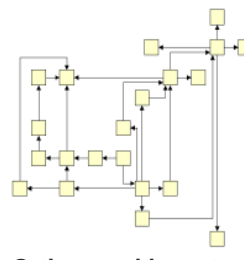
**System Requirements**

- J2xPLM: V 1.0.4 or later
- e6 Connector: V 1.1.0 or later
- Agile e5/6: 5.1 or later

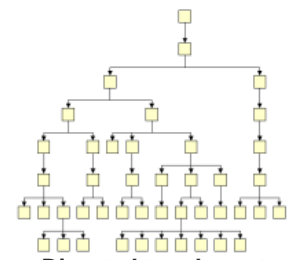
The minimum hardware and software requirements are the same as those required for PLM or CAD. For details of hardware and software requirements, please refer to the respective CAD and PLM prerequisites.



Hierarchical layout



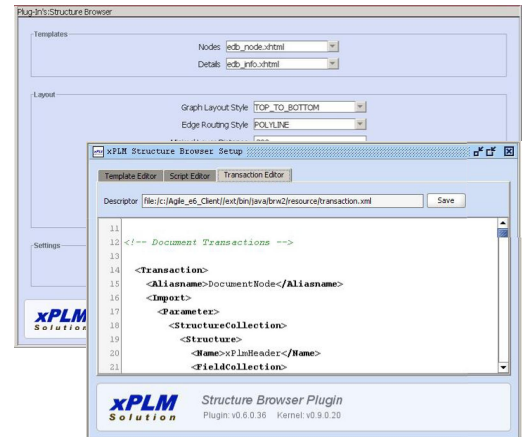
Orthogonal layout



Directed tree layout

**Customization Capabilities and Layout Configuration**

Based on the standard functionality of yFiles® the J2xPLM Structure Browser provides many useful layout stages that can be configured programmatically to suit most layout demands. This ensures a highly efficient presentation of complex PLM structures. Robust customization capabilities are provided yielding lower support and maintenance costs. XML definition and script engine enable creation and configuration of browser layout, PLM objects and transactions.



**Printouts**

Structure Layouts can be printed out easily. The J2xPLM Structure Browser offers numerous configurable print options.



**J2xPLM Integration Platform**

xPLM Solution's J2xPLM Integration Platform provides Agile PLM users efficient and robust integrations. The J2xPLM Integration Platform supports integration with many PDM/PLM, CAD, ERP, Visualization, ECAD and Data Exchange applications and MS-Office.



**About xPLM Solution**

xPLM Solution with headquarters in Dresden develops integration solutions between industry leading CAD, PLM, Data Exchange, DMU and ERP systems and provides deployment and support services to the PLM industry. xPLM Solution brings with them about 300 years of accumulated professional experience in the PLM market. For more than 25 years, the team has been at the forefront of developing and deploying robust, flexible, configurable and cost efficient CAD and PLM integrations.

**Solutions and Deployment Services**

- CAD Integrations for PLM, ERP, VR/DMU, Office and Data Exchange solutions
- PLM Management Consulting
- PLM Deployment Services
- PLM Training
- Client Project Support Services



xPLM Solution an Oracle Certified Service and Solution Partner and Oracle founded "J2CI" the Joint Competency Center for CAD Integration.